

CANAL IS OPENED BY WILSON'S FINGER

**Gamboa Dike Blown Away as
President in Washington
Presses Button.**

SMALL CRAFT RUN THROUGH

**Great Crowds Cheer as Waters of
Gatun Lake Pour Into Culebra
Cut—Col. Goethals Happy.**

Special Cable to THE NEW YORK TIMES.

PANAMA, Oct. 10.—With an explosion which shook the surrounding hills and threw huge rocks high into the air eight tons of dynamite were set off this afternoon by President Wilson touching a button in Washington, more than 4,000 miles away. Gamboa dike, the last obstruction in the Panama Canal, was swept away, and the dream of centuries became a reality.

Following the explosion at two minutes past 2 o'clock the waters of Gatun Lake, which have been flowing slowly into Culebra Cut for the last five days through five pipes thrust through the dike, rushed into the great cut, and the Panama Canal was completed except for the finishing touches and the dredging and widening of the channel.

Half an hour later intrepid canal workers, who had been hovering about the lake in canoes, turned the noses of canoes and launches into the rapids caused by the water rushing into the cut, and while a great throng on the bank cheered wildly and the whistles of locomotives and dredges shrieked a prolonged, piercing salute the first vessels to make the passage passed through in safety.

As Col. Goethals, the builder of the canal, viewed the practical conclusion of his great work his face was wreathed in smiles, and he turned, beaming, to receive the congratulations of his guests invited to witness the historic spectacle. These include Philippe Bunau-Varilla, chief engineer of the first canal company, and Congressman and Mrs. Nicholas Longworth.

Thousands of sightseers had journeyed from the City of Panama and from Colon in special trains. The crowds were kept 1,500 feet from the canal, but everybody obtained a splendid view of the event.

The passage of any sort of light-draught vessel through the canal now is possible, and to-morrow the big dredges will be floated into the cut from Gatun Lake and will commence eating into the slides in Culebra Cut and clearing up the remains of the dike destroyed to-day. In a few weeks vessels of heavy draught will be able to make the journey from ocean to ocean.

The Dike Before It Was Blown Up by President Wilson.

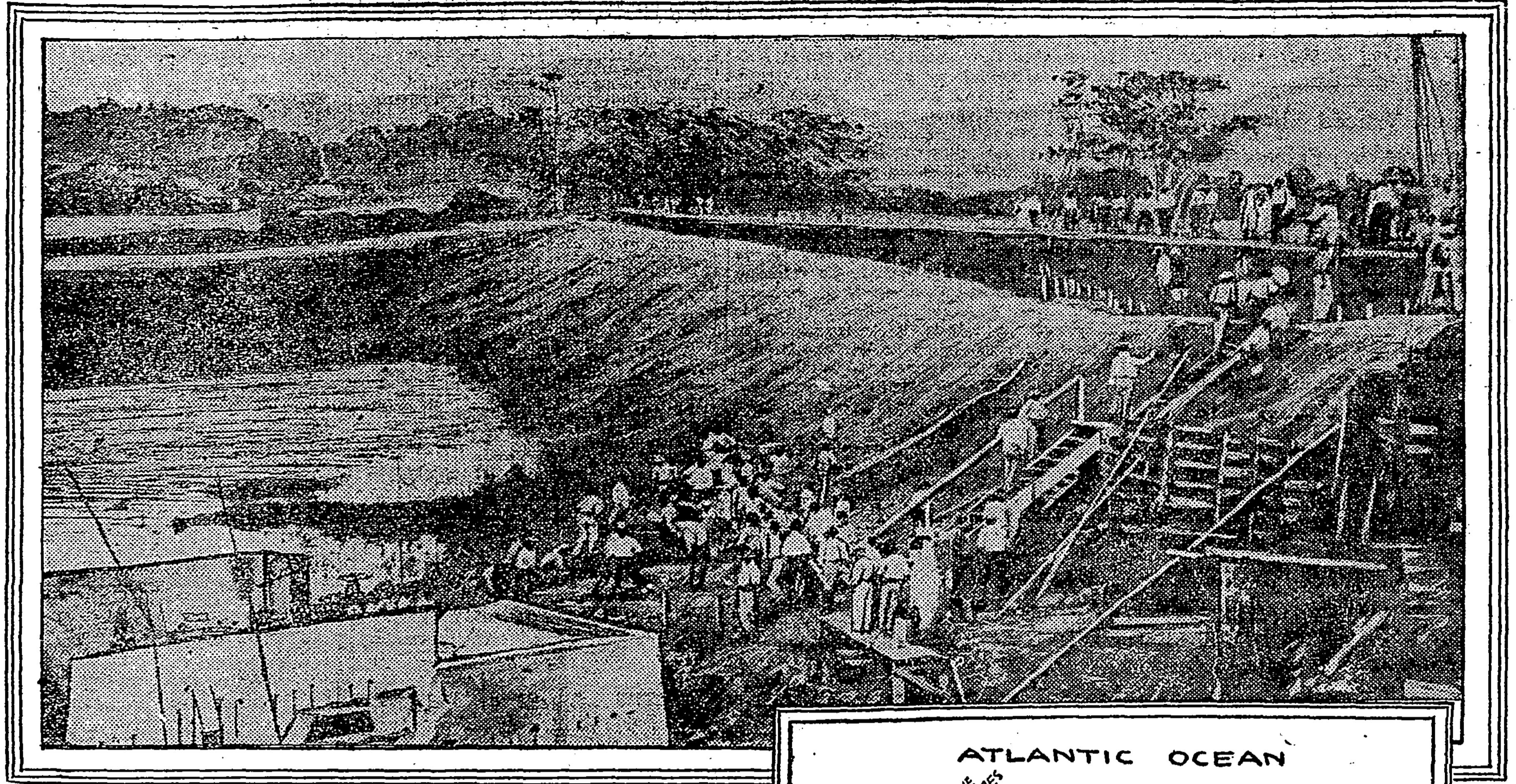
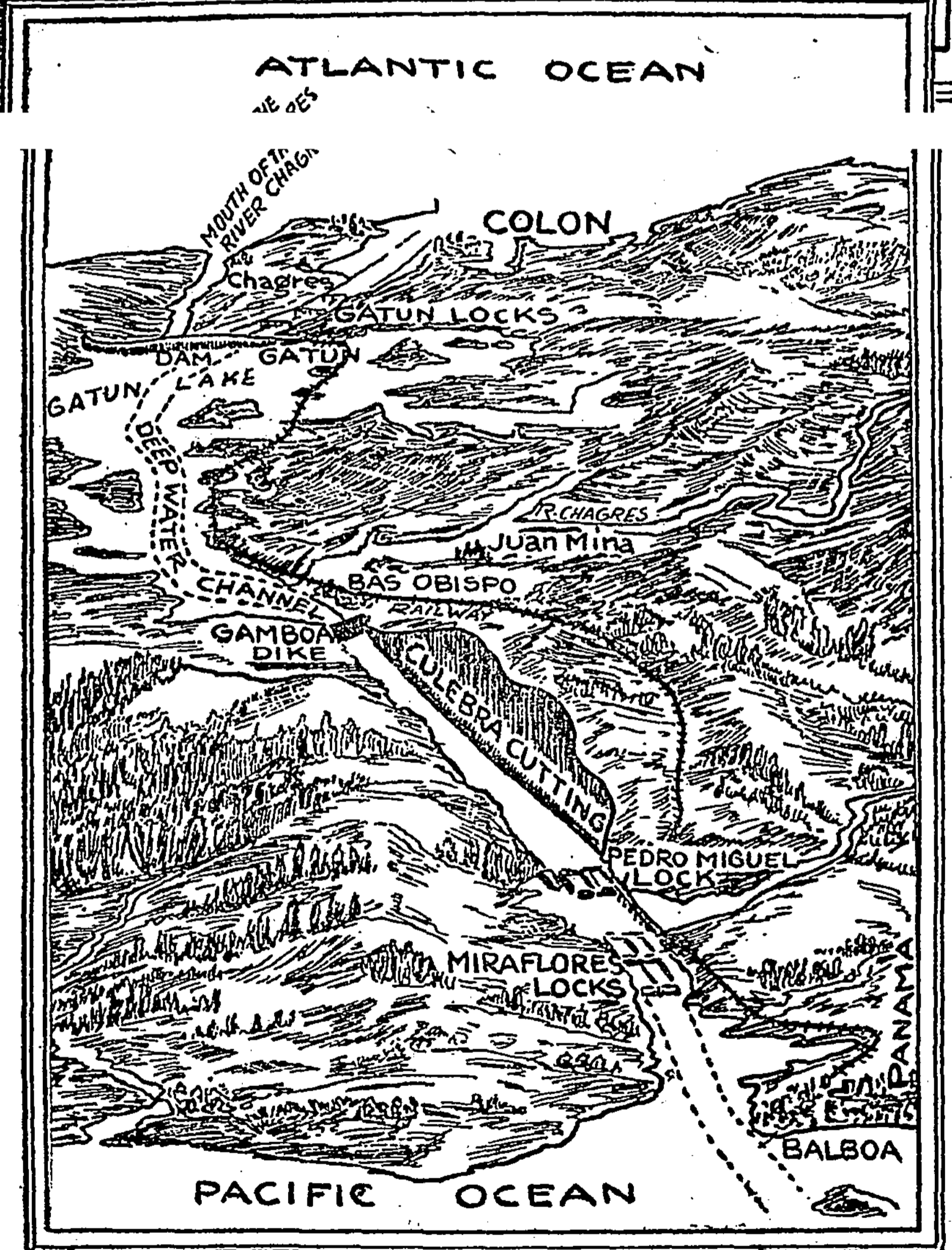


Photo by Underwood & Underwood.
The Gamboa Dike, Which Was Blown Up.



MAP OF PANAMA CANAL SHOWING
GAMBOA DIKE.